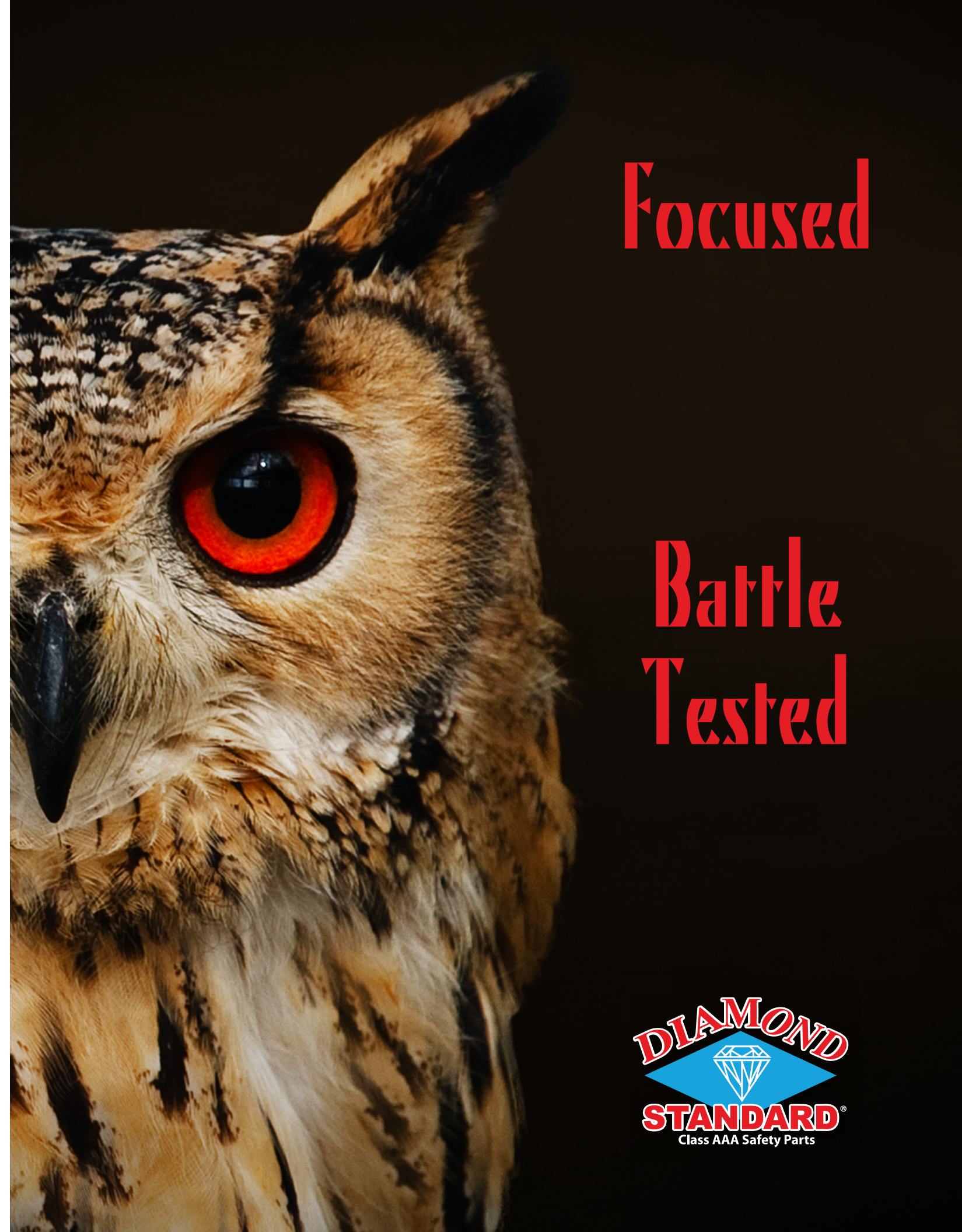


- YES, CERTIFICATION IS A VERY IMPORTANT TOOL AND HAS DRAMATICALLY RAISED THE QUALITY OF ALTERNATIVE PARTS.
- DIAMOND STANDARD WAS INSTRUMENTAL IN THE DEVELOPMENT OF THOSE STANDARDS.
- HOWEVER, EVEN CERTIFICATION CAN'T POSSIBLY EXAMINE EVERY PART, BUT WE DO.
- IN A LITIGIOUS AGE FOR YOUR PEACE OF MIND, TRUST DIAMOND STANDARD.
- THE ONLY MANUFACTURER THAT FULLY STAFFS A DSTL, DIAMOND STANDARD TAF/ISO17025 TEST LAB.
- 35 ACCREDITED MATERIAL, COATING, WELDING, FASTENER, QUASI-STATIC AND DYNAMIC TESTING PROTOCOLS.
- MATERIAL PROCESS CONTROL, PIECE BY PIECE LOT INSPECTION, PRE-PACKAGING INSPECTION FOR FIT AND QUALITY.
- ONE QUALITY, NO ECONOMY PARTS, EXCLUSIVE AMONG STRUCTURAL PARTS MANUFACTURERS. NO SHORT CUTS. NO SUBSTITUTION.

**BOTTOM LINE
DEMAND DIAMOND STANDARD
WIN THE BATTLE**



Focused

**Battle
Tested**





BATTLE TESTED

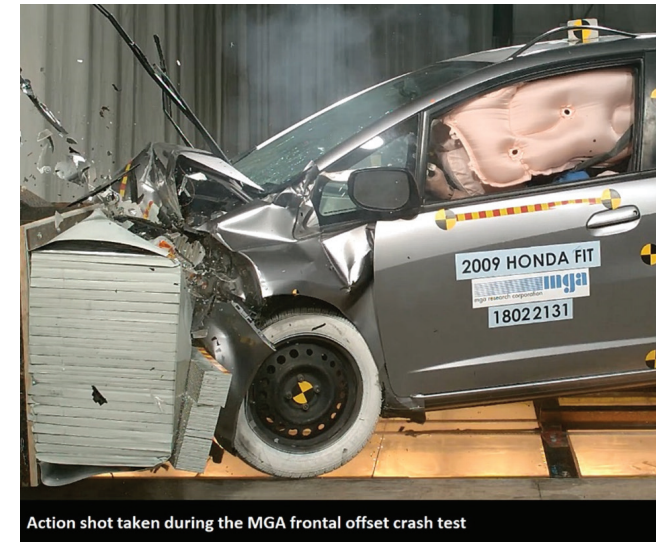


OEM

DIAMOND STANDARD

OEM - IIHS

DIAMOND STANDARD

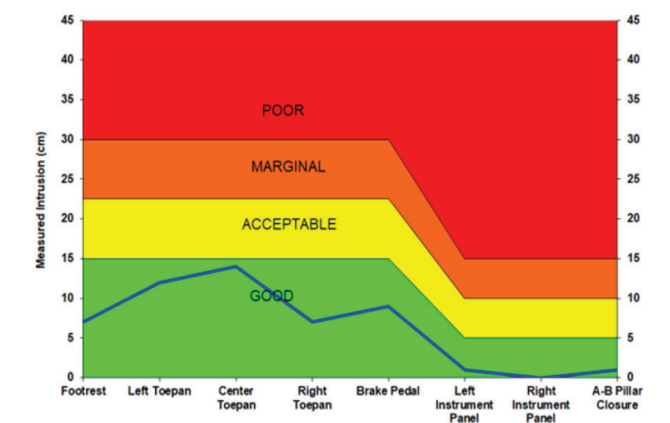
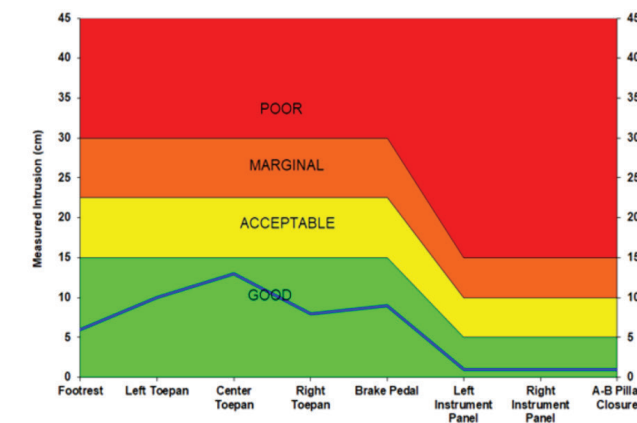
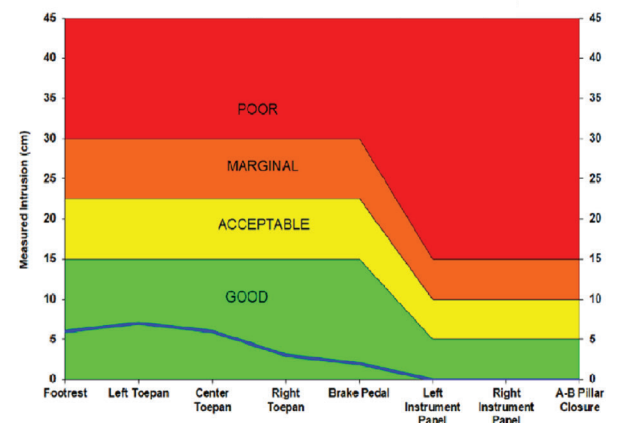
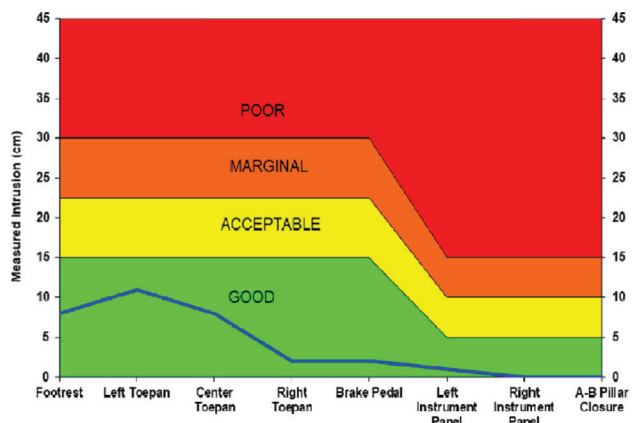


OEM

DIAMOND STANDARD

OEM - IIHS

DIAMOND STANDARD



Good Acceptable Marginal Poor

Blue Line indicates test results for each vehicle

Good Acceptable Marginal Poor

Blue Line indicates test results for each vehicle

DODGE RAM
IIHS TEST FACILITY - RUCKERSVILLE, VA

HONDA FIT
IIHS TEST FACILITY - RUCKERSVILLE, VA
MGA TEST FACILITY - BURLINGTON, WI